

Do you live in a
nursing home and
want to get help
moving back into
the community?



Your interest in
Roads to Community Living
is important to us.



For more information

Call:

Or visit our website:

www.adsa.dshs.wa.gov/professional/roads/



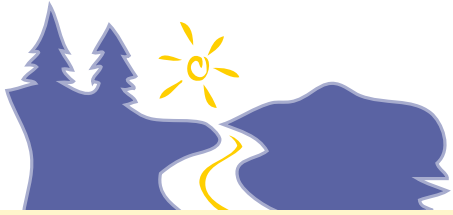
ADSA Aging & Disability
Services Administration
DSHS 22-1297X (9/08)

Roads to Community Living



**Helping People Living
in Nursing Homes Return
to Their Community**

Washington State Department of Social and Health Services
Aging and Disability Services Administration



Roads to Community Living

What is Roads to Community Living?

Roads to Community Living is part of a federal program called Money Follows the Person. This program investigates what services and support will help adults needing complex, long-term care successfully move from a nursing home (or other types of institutions) back into the community.

If you are eligible and want to be in the program, you will:

- Receive intensive one-on-one help to develop a transition plan. This plan will include the services and support you need to move back into the community.
- Have access to additional services and support currently unavailable through existing programs.

These may be one-time-only expenditures or services needed during your move and transition back into the community.



Who Can Participate in the Program?

Roads to Community Living is for anyone:

- Living in a nursing facility for six months or longer.
- Receiving Medicaid to pay for care.
- Requiring services that exceed those currently available.



What Kinds of Services and Support May Be Available?

- Help finding and setting up appropriate affordable housing.
- Life skills training or consulting services to help prepare you to live in the community again.
- Problem solving and behavior management skills training if challenging behaviors may jeopardize moving or remaining in the community.
- Assistive technology and durable medical equipment.
- A service animal.
- Training, education, or support for family and other caregivers.
- Mental health or substance abuse consultation or services.

"It took six months and a lot of hard work. With the support from the Roads to Community Living team, I'm back home!"